

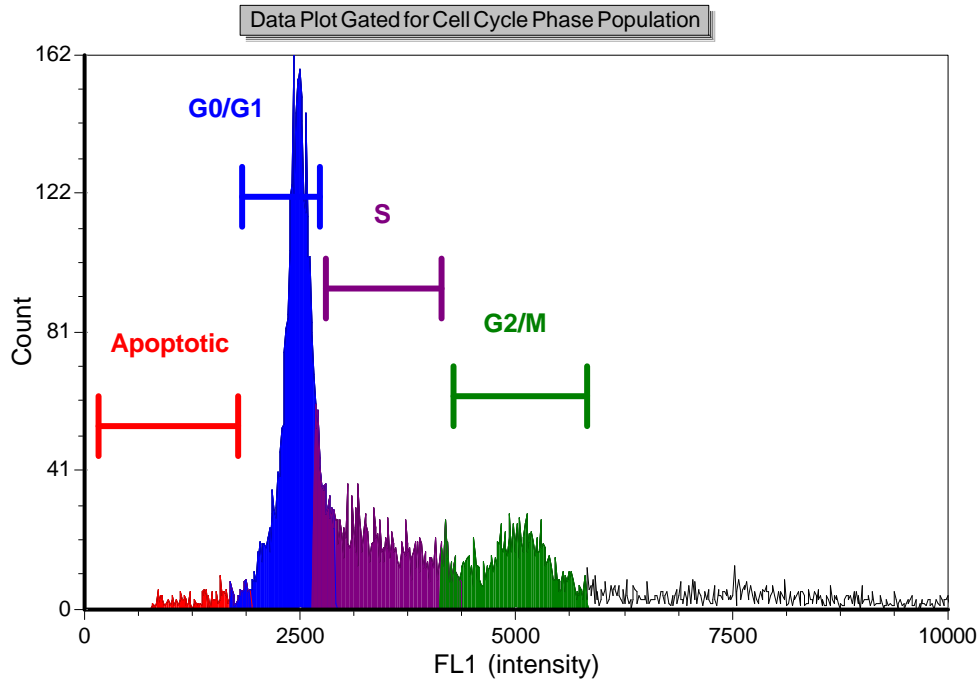
Assay Name: CBA_Cell Cycle-PI595nm

Description:

File Name: Cell Cycle Control.NXDat

Sample ID:Cell Cycle Control

Date: 1/18/2012



Total Cell Count: 8633

Dilution Factor: 1.00

Phase Population	% of Gated Cells	Concentration (x 10 ⁶ Cells/ml)
Total	100.00	12.15
Apoptotic	2.42	0.29
G0/G1	42.43	5.15
S	20.75	2.52
G2/M	16.90	2.05

Note: Cellometer Vision CBA software measures cells within size range defined by Cell Type. With this method, cell debris are not included. Please check and modify min and max cell size in Cell Type parameters when needed.

Fluorophore 1:PI

Fluorophore 2:

Optics Module 1:VB-595-502

Optics Module 2:

Imaging Mode:Fluorescence

F1 Cell Type:CBA_Cell Cycle PI 595nm

F2 Cell Type:

F1 Exposure (ms):200.0

F2 Exposure (ms):

Slide Type:CHT4-xD100