

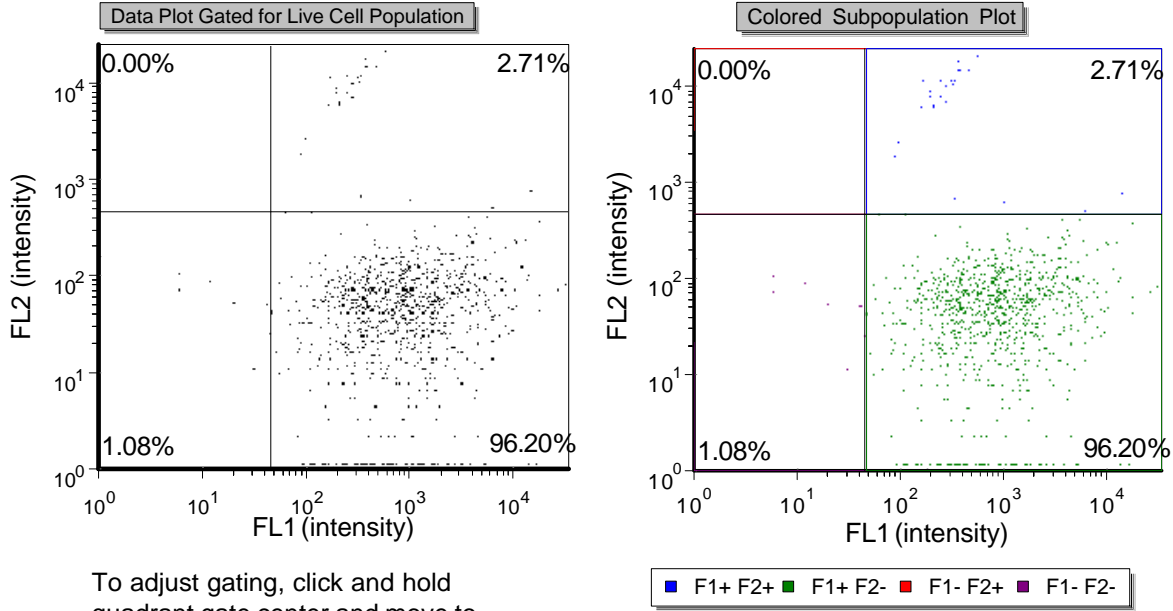
Assay Name: CBA_GFP_PI Viability

Description:

File Name: Cell Line GFP + PI-2.NXDat

Sample ID: Cell Line GFP + PI-2

Date: 1/18/2012



To adjust gating, click and hold quadrant gate center and move to desired location.

Total Cell Count: 922

Dilution Factor: 2.00

Cell Population	% of Gated Cells	Concentration (x 10 ⁶ Cells/ml)
Total	100.00	2.62
Total Viability	97.29	2.55
Total FL Protein+	98.92	2.59
Total FL Protein+ Viability	97.26	2.52
Live FL Protein+	98.89	2.52

Note: Cellometer Vision-CBA software measure cells within size range defined by Cell Type. With this method, cell debris are not included. Please check and modify min and max cell size in Cell Type parameters when needed.

Fluorophore 1: GFP

Fluorophore 2: PI

Optics Module 1: VB-535-402

Optics Module 2: VB-595-502

Imaging Mode: Dual Expression

F1 Cell Type: CBA_GFP+PI Viability_F1

F2 Cell Type: CBA_GFP+PI Viability_F2

F1 Exposure: 6000.0

F2 Exposure: 1000.0

Slide Type: CHT4-xD100