

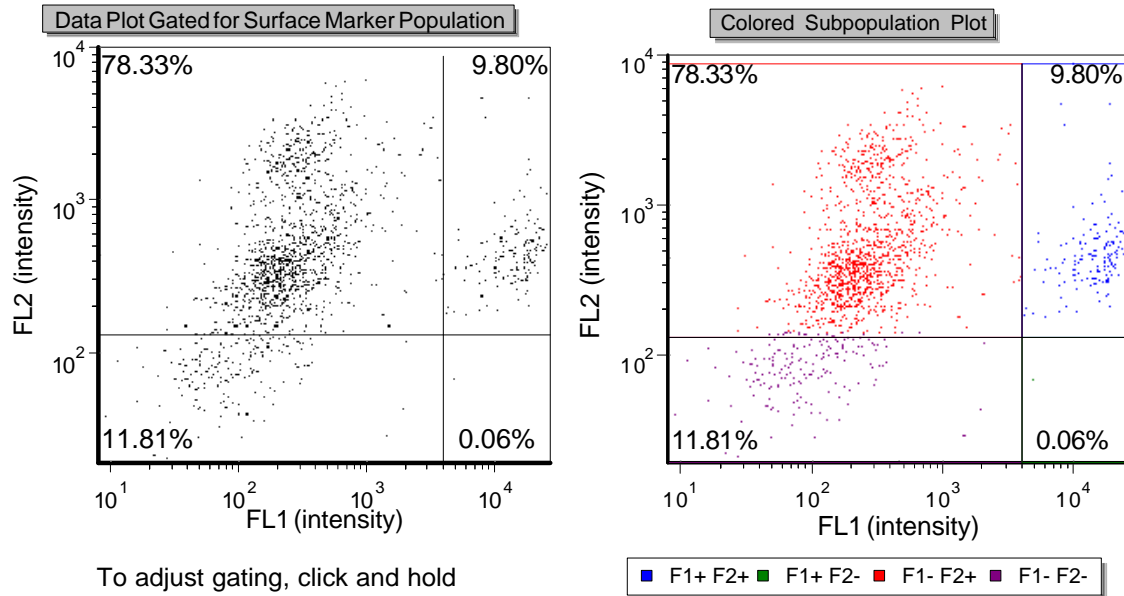
Assay Name: CBA_Surface Marker-FITC-PE

Description:

File Name: Cell Sample FITC-PE-2.NXDat

Sample ID: Cell Sample FITC-PE-2

Date: 1/18/2012



To adjust gating, click and hold quadrant gate center and move to desired location.

Total Cell Count: 1541

Dilution Factor: 1.00

Cell Population	% of Gated Cells	Concentration (x 10 ⁶ Cells/ml)
Total	100.00	2.19
F1+ F2+	9.80	0.21
F1+ F2-	0.06	0.00
F1- F2+	78.33	1.72
F1- F2-	11.81	0.26

Note: Cellometer Vision-CBA software measure cells within size range defined by Cell Type. With this method, cell debris are not included. Please check and modify min and max cell size in Cell Type parameters when needed.

Fluorophore 1: FITC
Fluorophore 2: PE
Optics Module 1: VB-535-402
Optics Module 2: VB-595-502
Imaging Mode: Dual Expression
F1 Cell Type: CBA_FITC_F1
F2 Cell Type: CBA_PE_F2
F1 Exposure: 7000.0
F2 Exposure: 10000.0
Slide Type: CHT4-xD100