

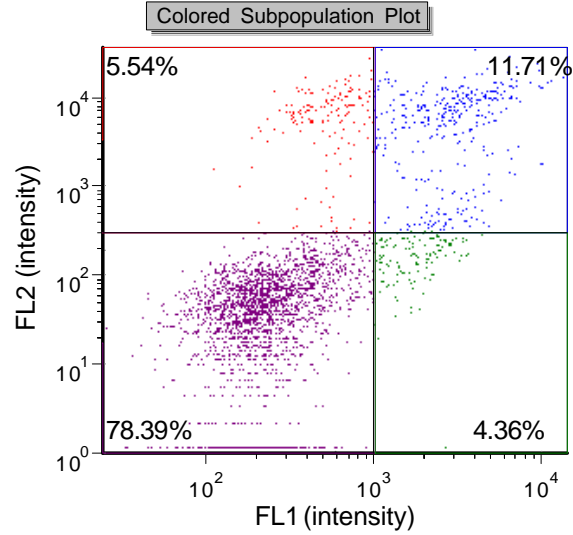
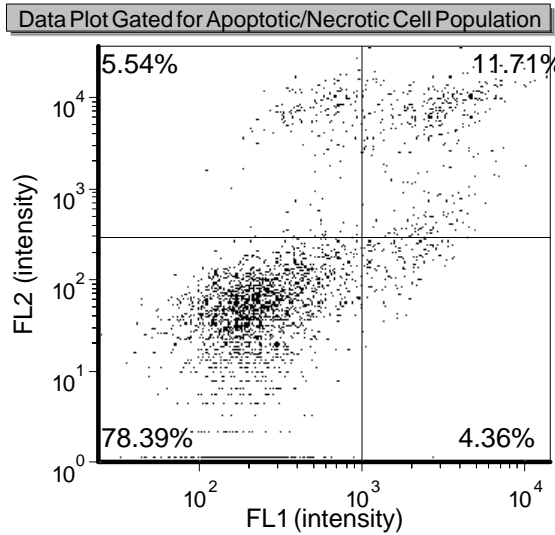
Assay Name: CBA_Apoptosis Annexin V + PI

Description:

File Name: Cells_Annexin V + PI-2.NXDat

Sample ID: Cells_Annexin V + PI-2

Date: 1/18/2012



■ Live ■ Apoptotic ■ Necrotic ■ Debris

To adjust gating, click and hold quadrant gate center and move to desired location.

Total Cell Count: 2818

Dilution Factor: 1.00

Cell Population	% of Gated Cells	Concentration (x 10 ⁶ Cells/ml)
Total	100.00	4.00
Live	78.39	3.14
Apoptotic	4.36	0.17
Necrotic	11.71	0.47
Debris	5.54	0.22

Note: Cellometer Vision CBA software measures cells within size range defined by Cell Type. With this method, cell debris are not included. Please check and modify min and max cell size in Cell Type parameters when needed.

Fluorophore 1: Annexin V FITC

Fluorophore 2: PI

Optics Module 1: VB-535-402

Optics Module 2: VB-660-502

ImagingMode: DualExpression

F1 Cell Type: CBA_Annexin V -FITC

F2 Cell Type: CBA_Apoptosis - PI

F1 Exposure (ms): 5000.0

F2 Exposure (ms): 5000.0

Slide Type: CHT4-xD100