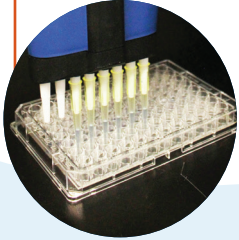
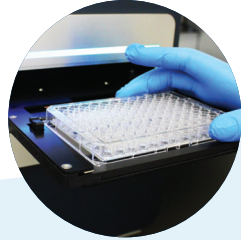


# Cellaca™ MX

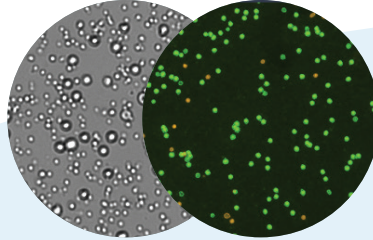
## High Speed, High Throughput Cell Counter



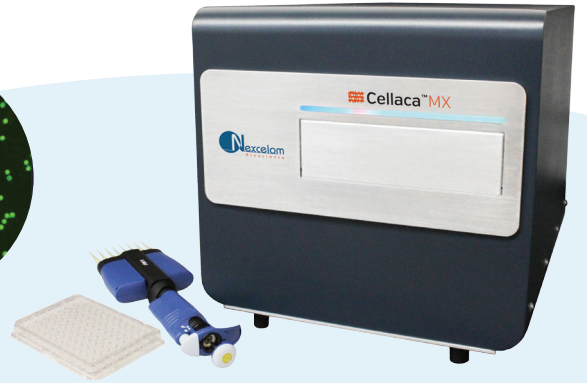
**1** Pipette sample



**2** Insert plate & count



**3** Get images & data



### As quick as 48 seconds for 24 samples

CHO cells stained with trypan blue

Viability: trypan blue or fluorescent dyes • 24 Samples per plate • 50 µl - 200 µl/sample • Count cell lines & primary cells

### Automation Ready



Our workflow is so streamlined with Cellaca, I can pick up my kids from school in the afternoon!

**REQUEST  
A FREE  
DEMO!**

[nexcelom.com/  
cellaca](http://nexcelom.com/cellaca)

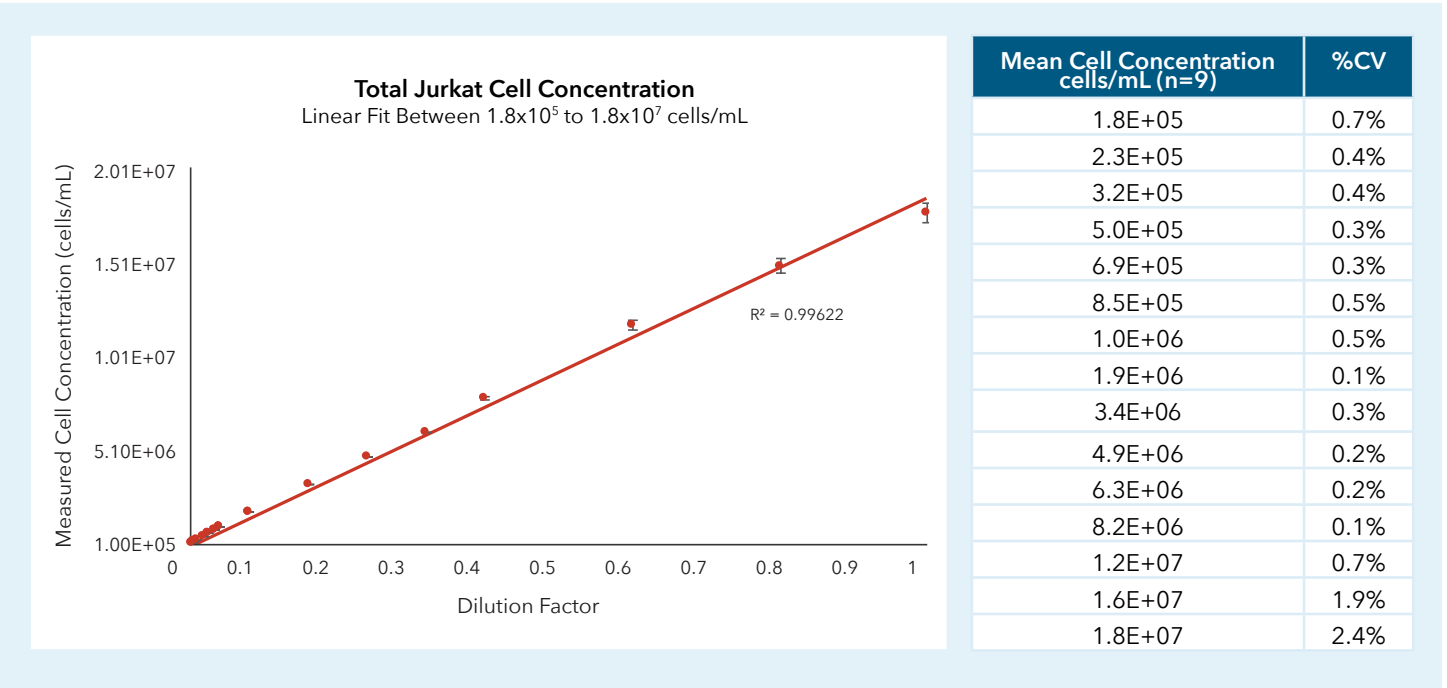
50 animals, 150 samples, all counted within 1.5 hours!

Innovation and Expertise in the Science of Cell Counting

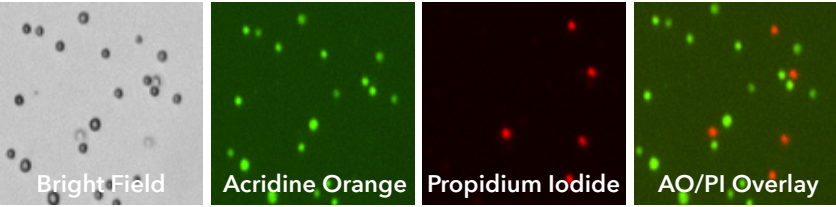
978-327-5340 | [info@nexcelom.com](mailto:info@nexcelom.com) | [www.nexcelom.com](http://www.nexcelom.com)



System Specifications	
Dimensions	13 in x 13 in x 16 in (33 cm x 33 cm x 41 cm )
Weight	42 lbs (19 kg)
Excitation LED	365, 470, 527 and 620 nm
Emission Filters (bandpass, center wavelength)	452, 534, 605, 655 and 692 nm
Volume per Sample	50 -200 $\mu$ L
Counting Speed per Sample	2 sec - 17 sec (assay dependent)



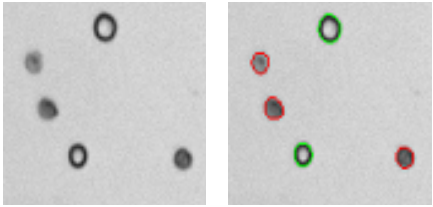
**Count Human PBMCs with AO/PI Staining**



A human PBMC sample stained with Acridine Orange/Propidium iodide (AO/PI) and imaged on the Cellaca.

Example Dyes & Fluorophores				
Hoechst	GFP	APC	CFDA	CFP
DAPI	PI	JC-1	Calcein AM	YFP
AO	PE	FITC	RFP	7AAD

**Count CHO Cells Stained with Trypan Blue**



CHO cells stained, imaged and automatically analyzed by the Cellaca. Live cells are outlined in green while dead, trypan blue (TB) cells are outlined in red.